

Identification of migration corridors for large carnivores in the Carpathians

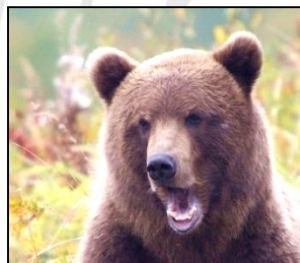
Coltesti, Romania
25-28. November 2019

Václav Hlaváč



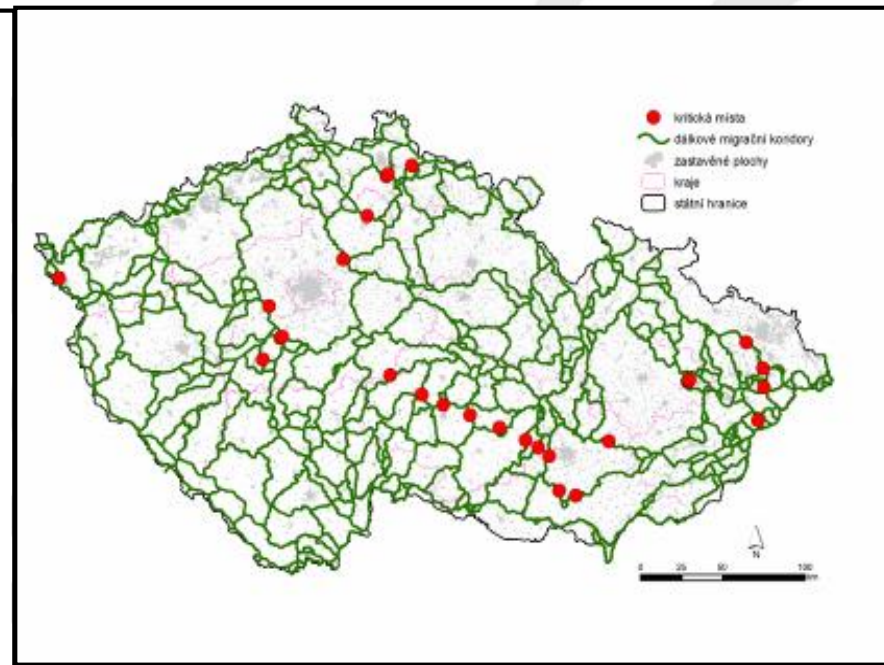
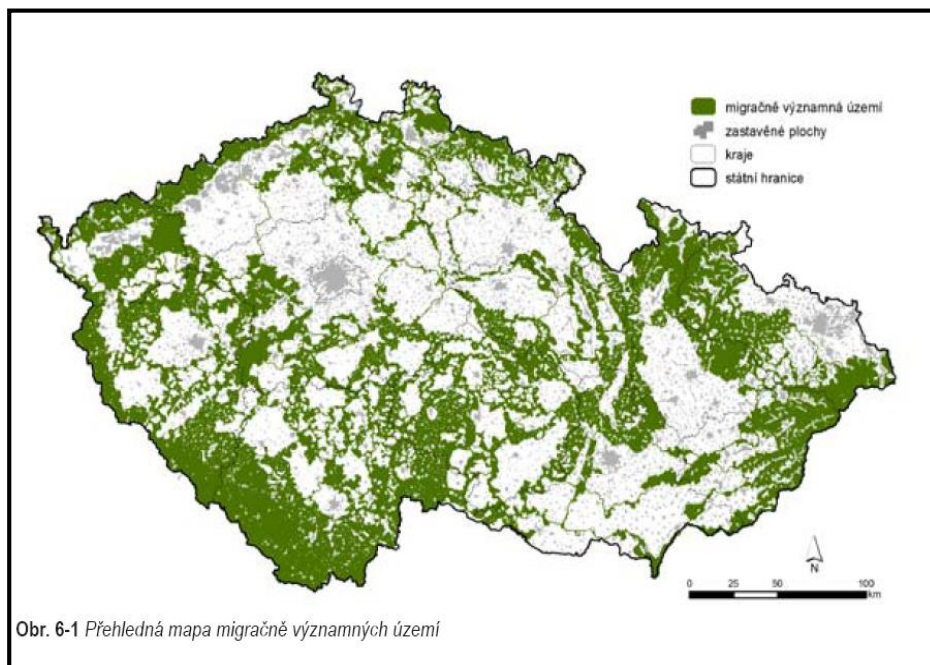
Connectgreen project : two main tasks (expected outputs):

1. **METHODOLOGY FOR IDENTIFICATION OF MIGRATION CORRIDORS FOR LARGE CARNIVORES IN THE CARPATHIAN COUNTRIES**
2. **MAP OF MIGRATION CORRIDORS FOR THE WHOLE CARPATHIANS**



Experience from the Czech Republic:

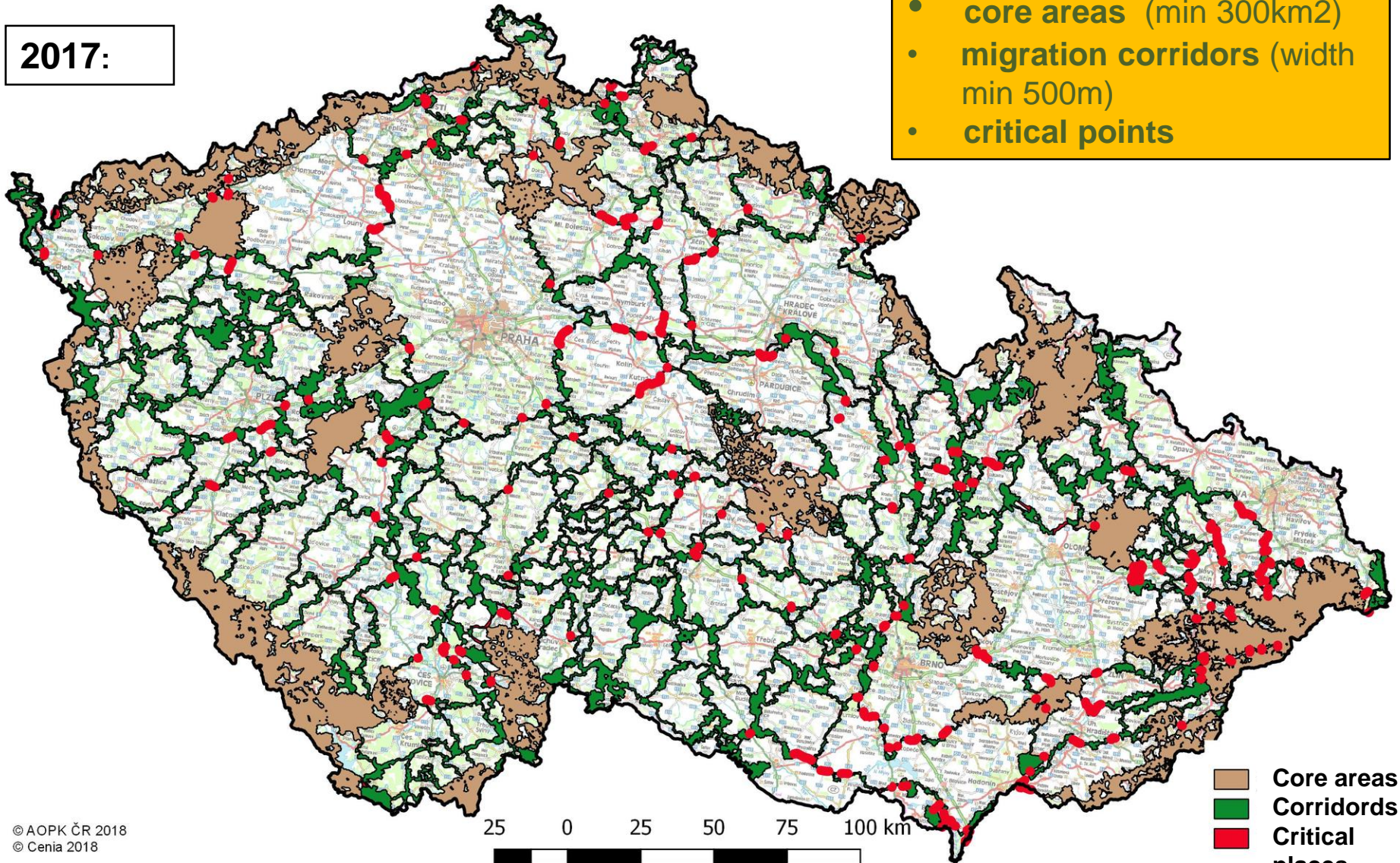
first project in 2008:



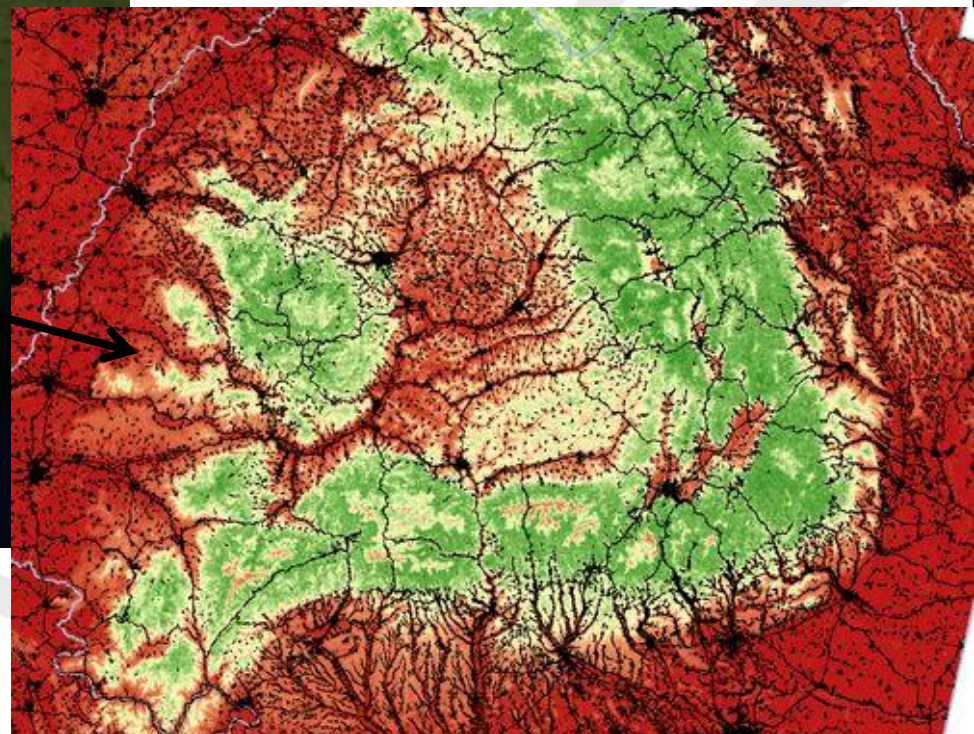
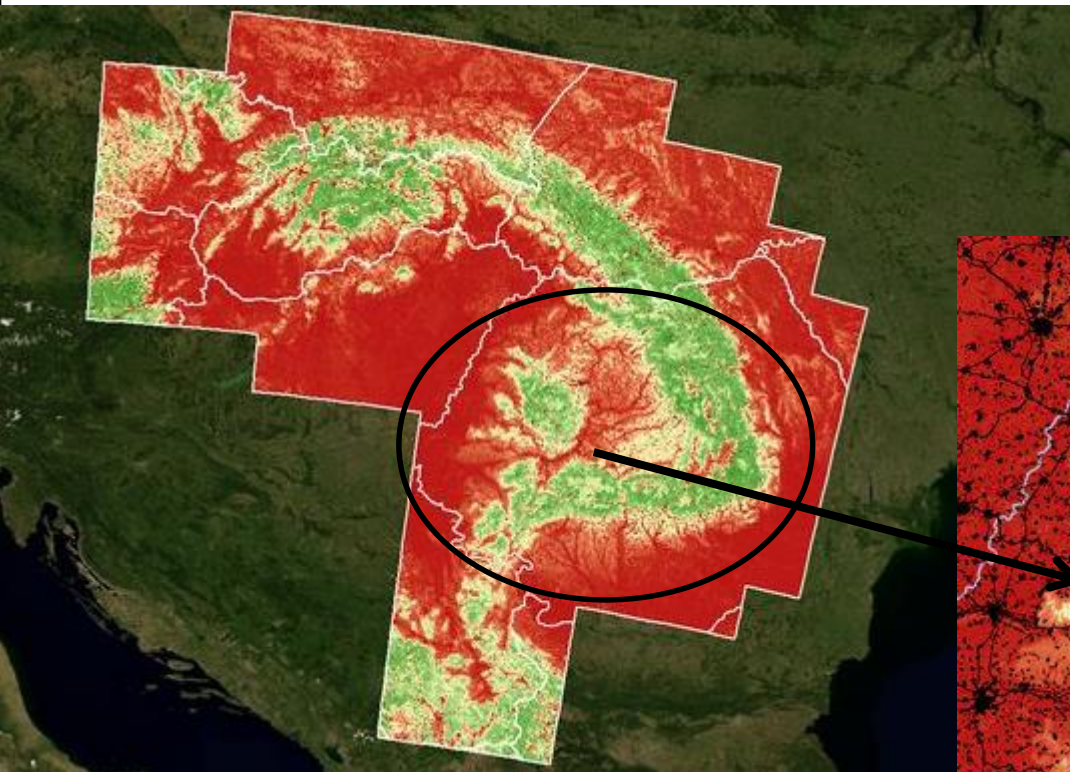
Habitat of protected species of large mammals in the Czech Republic

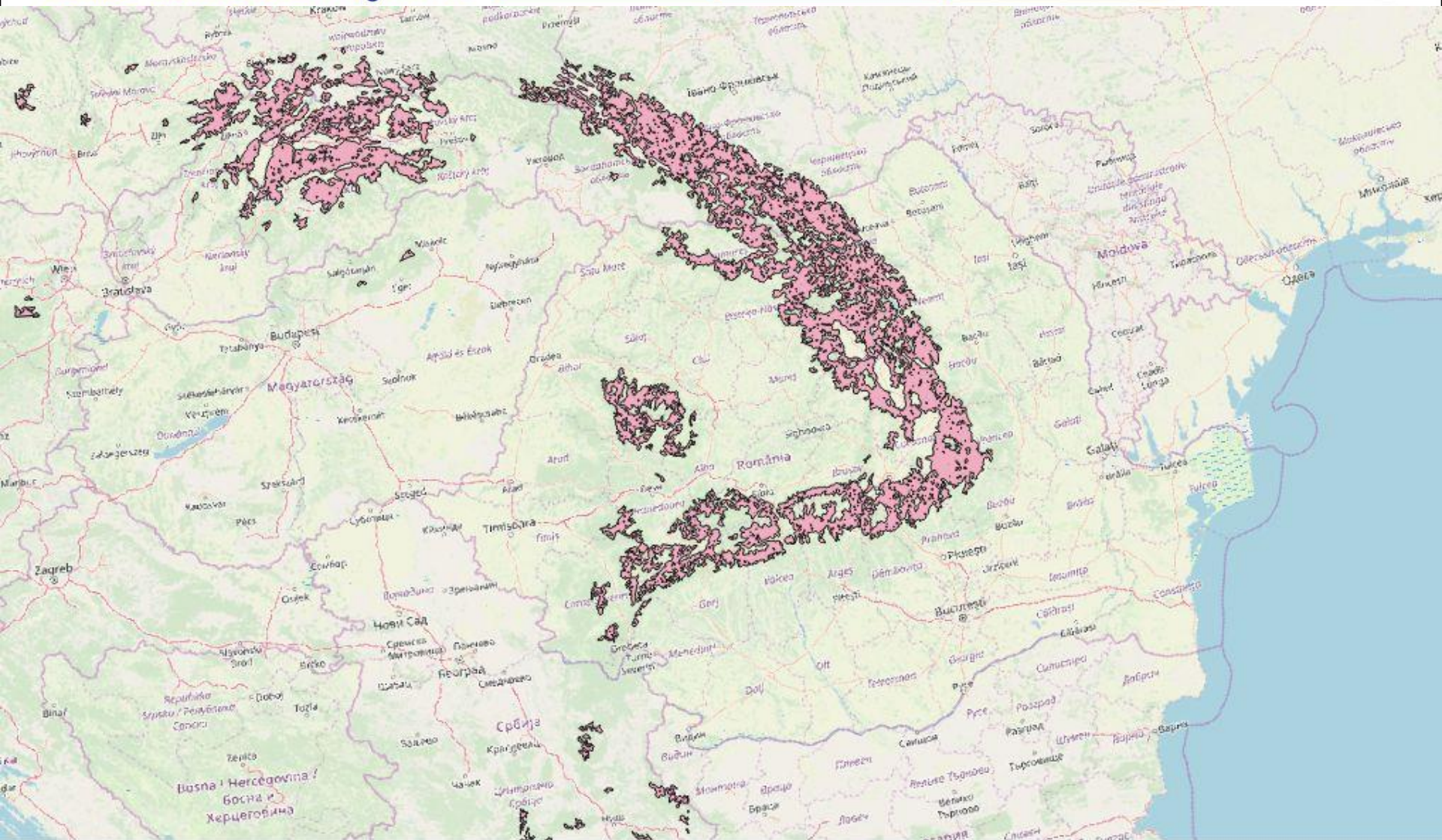
2017:

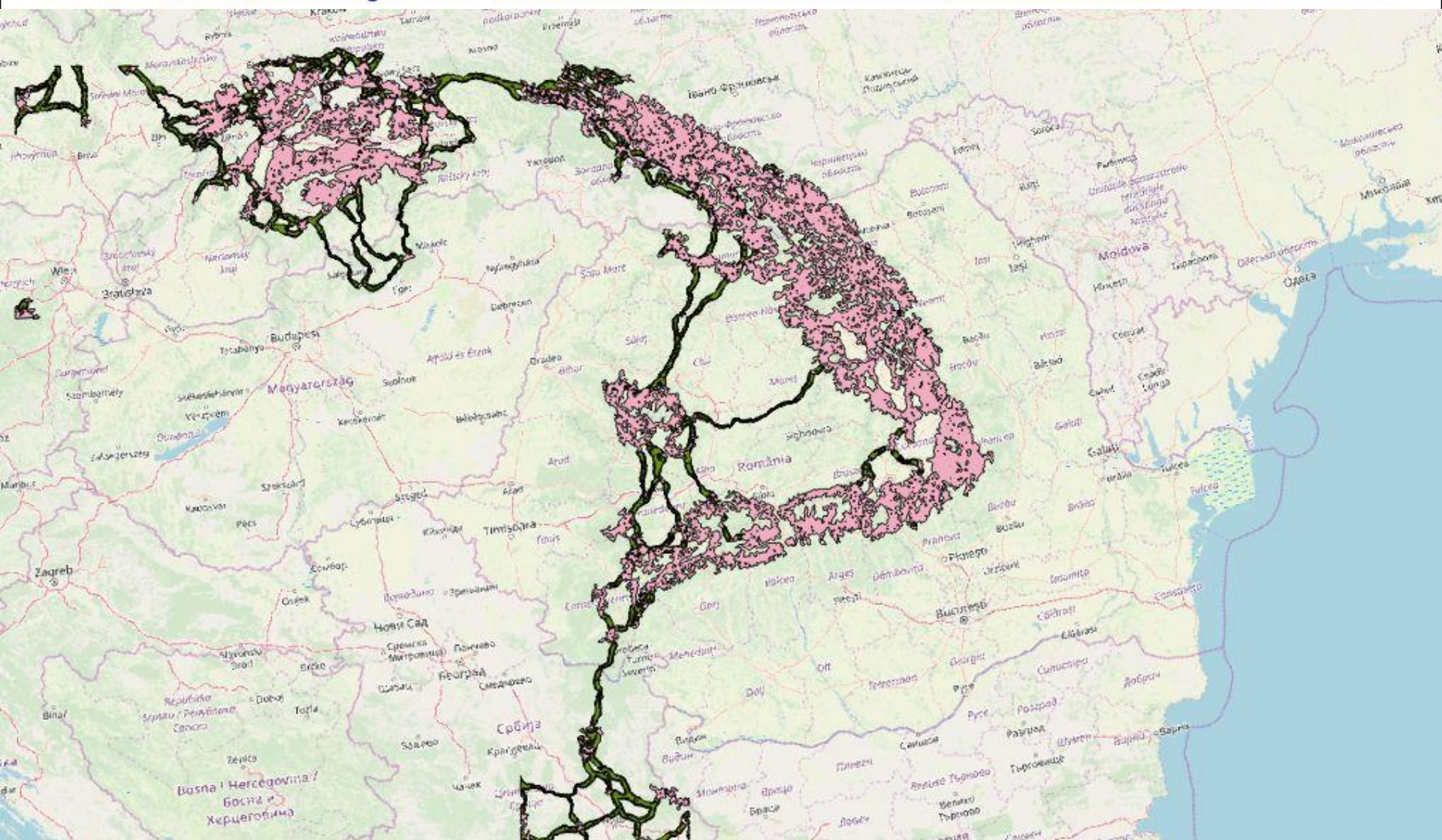
- core areas (min 300km²)
- migration corridors (width min 500m)
- critical points



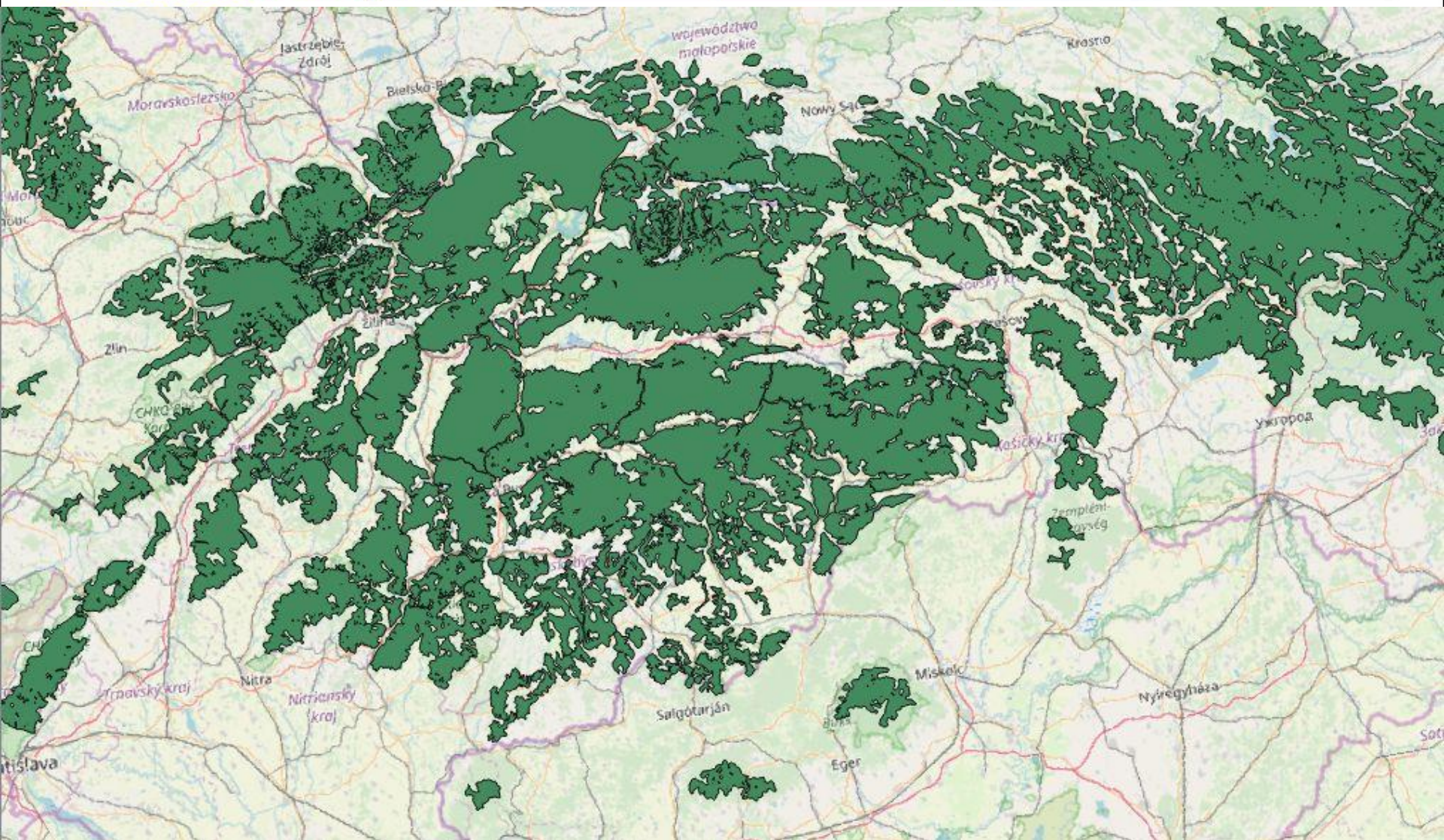
Habitat suitability model

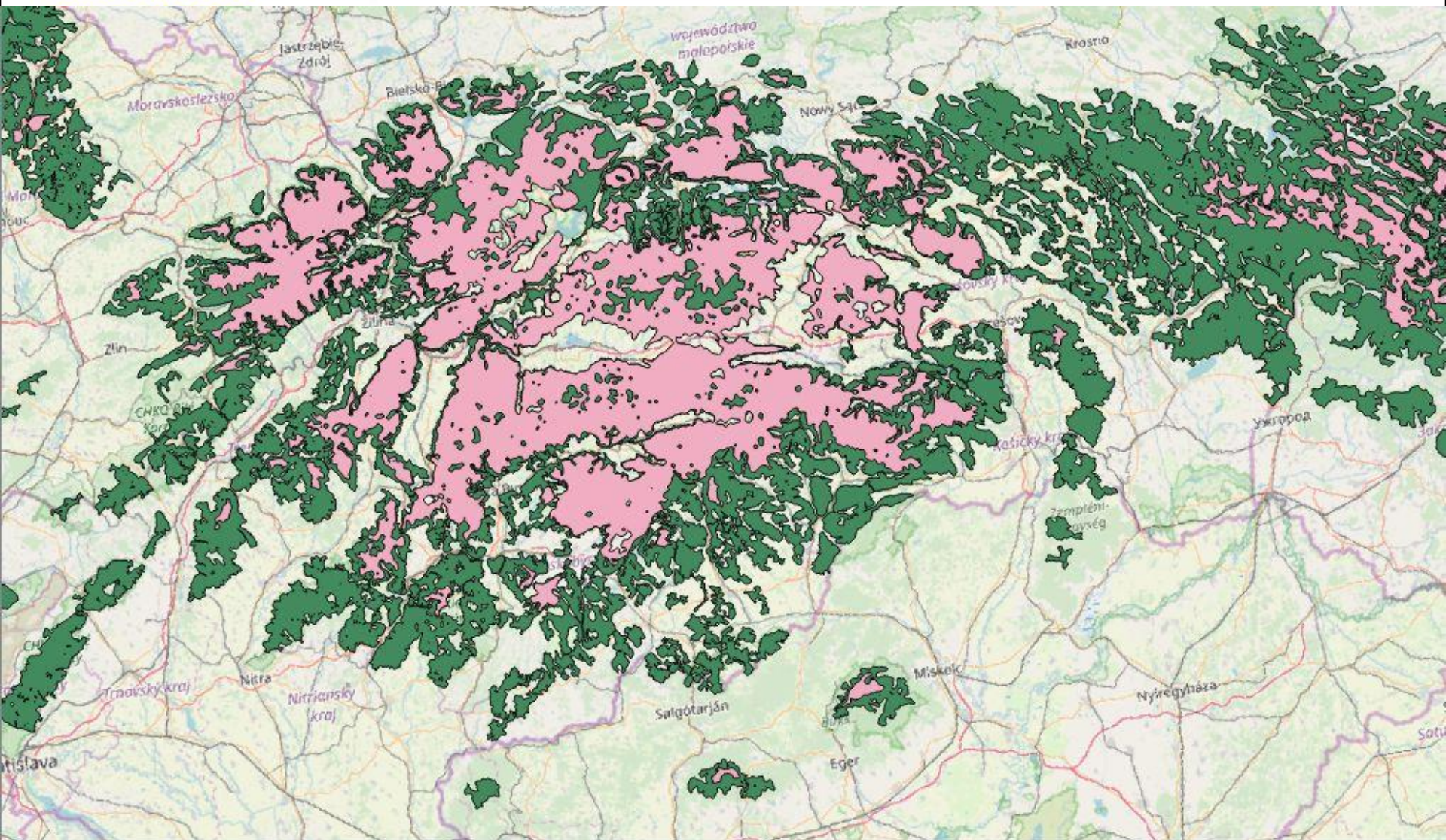


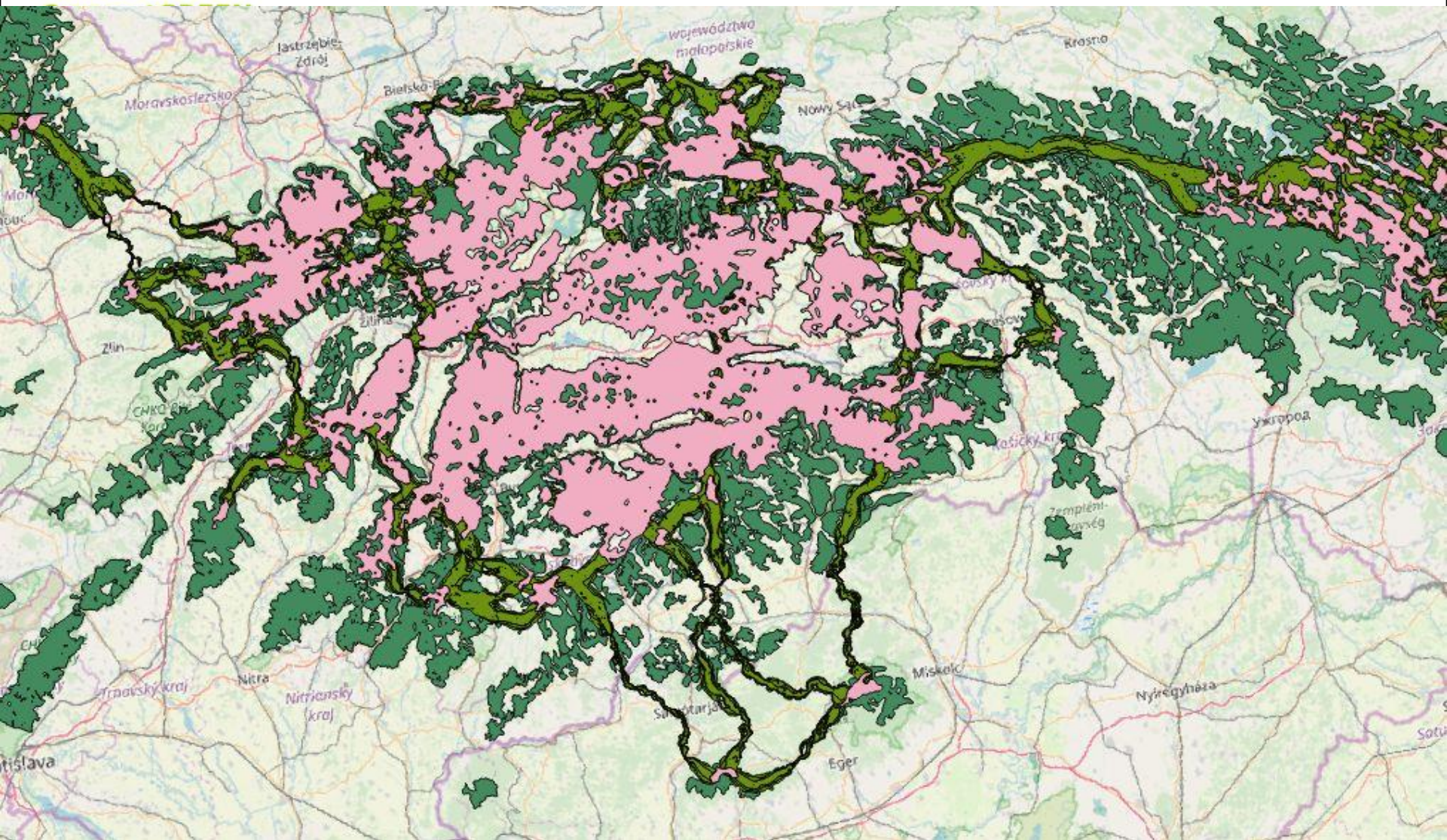


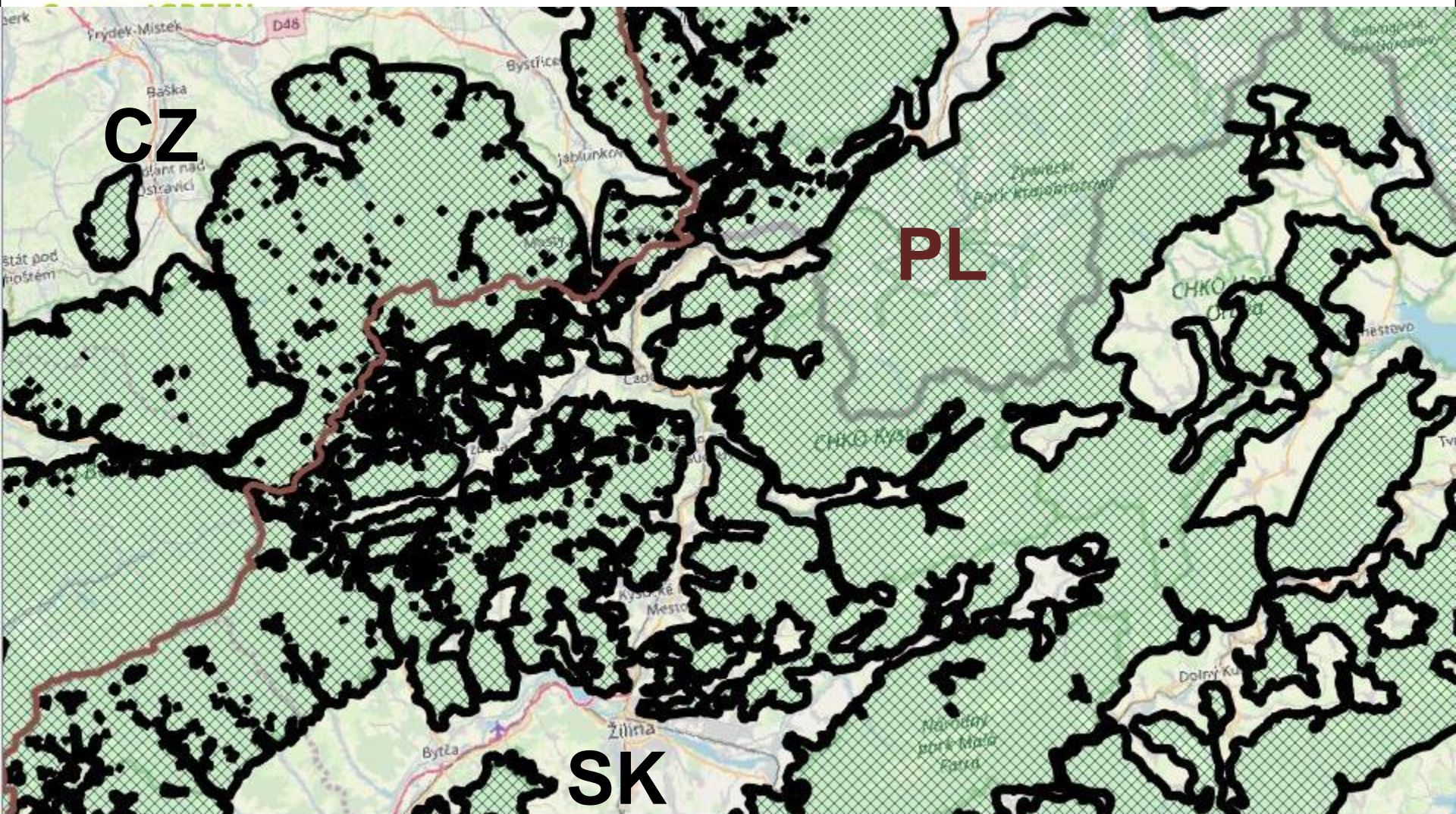


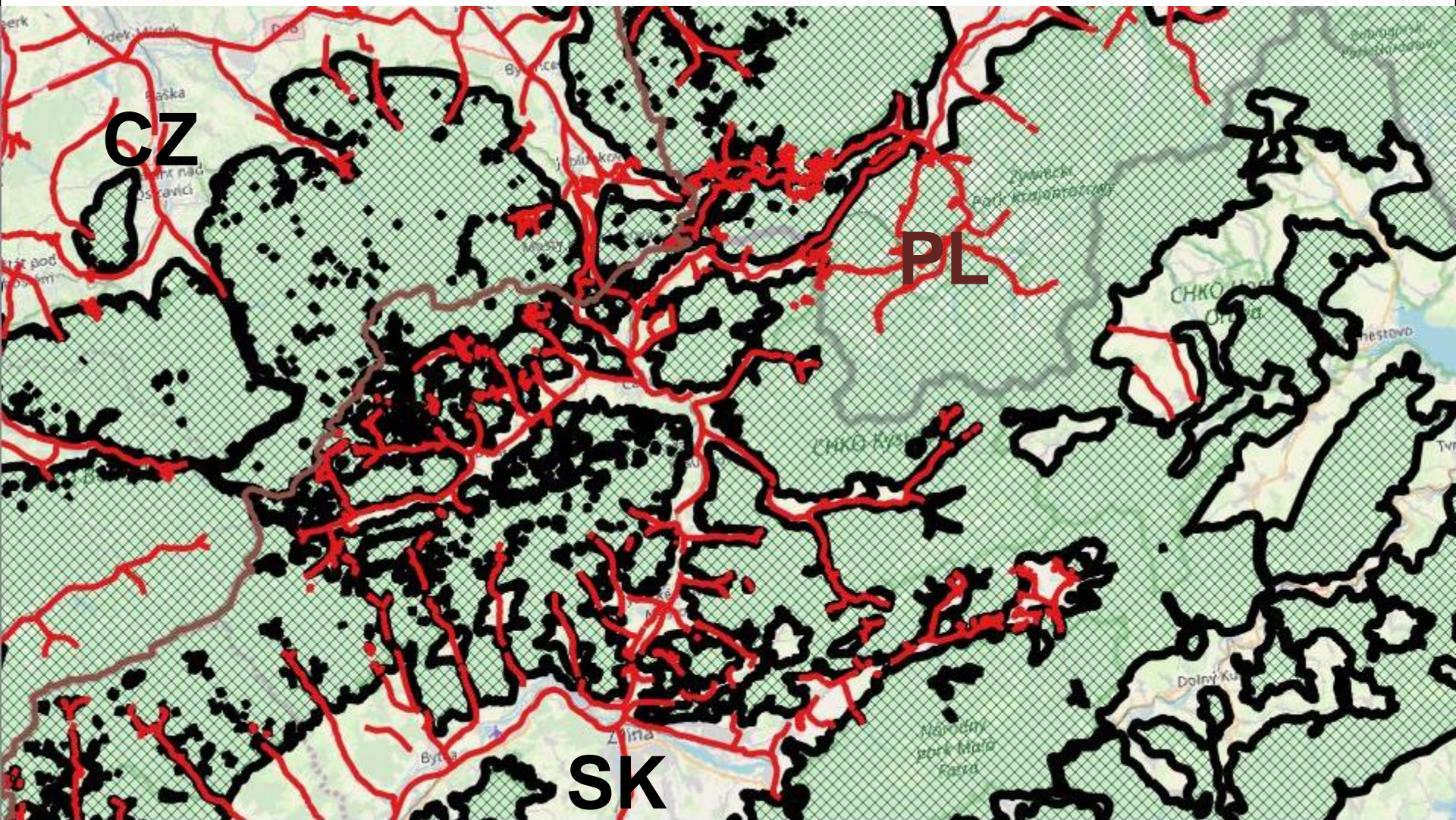


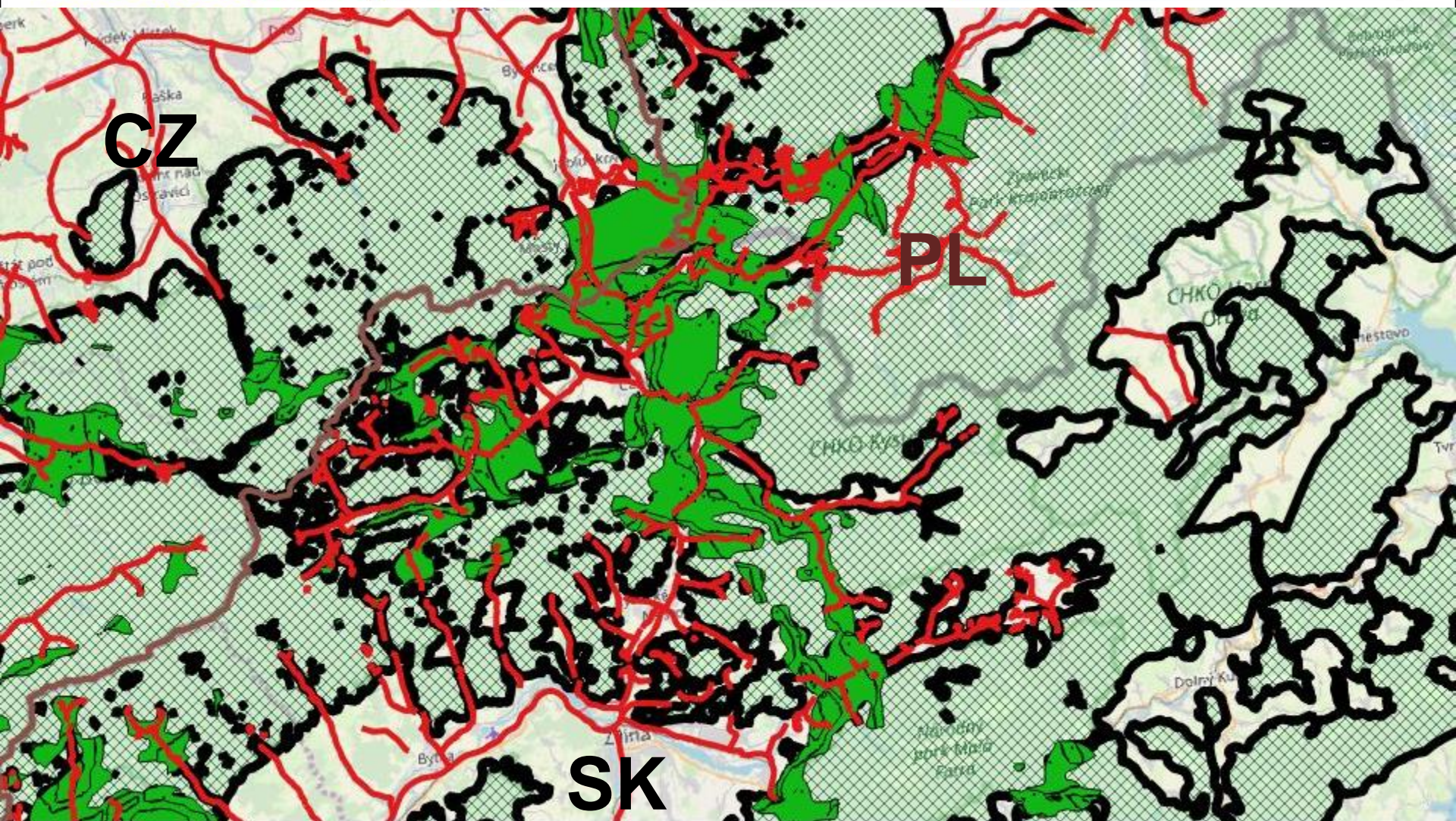


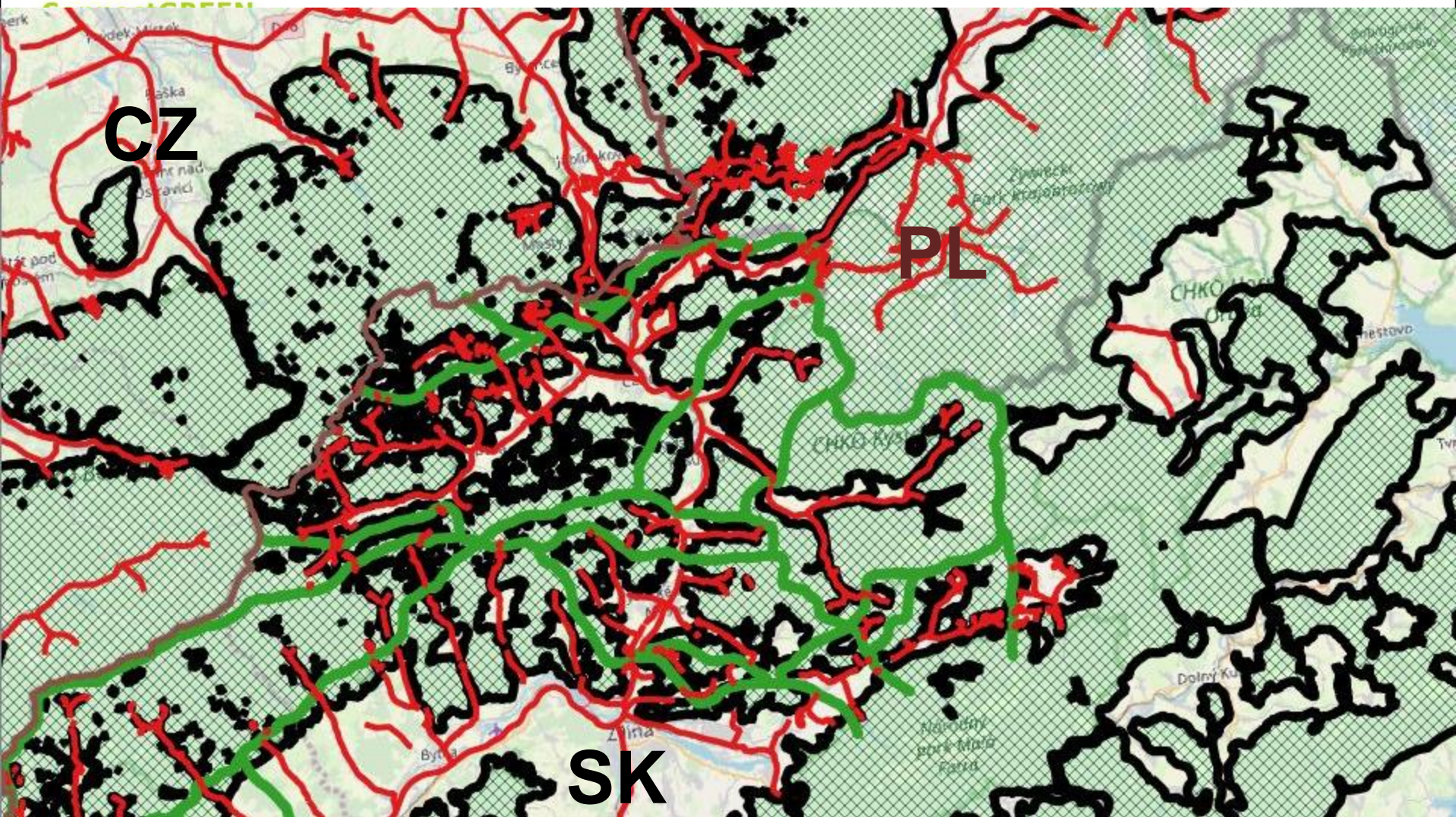


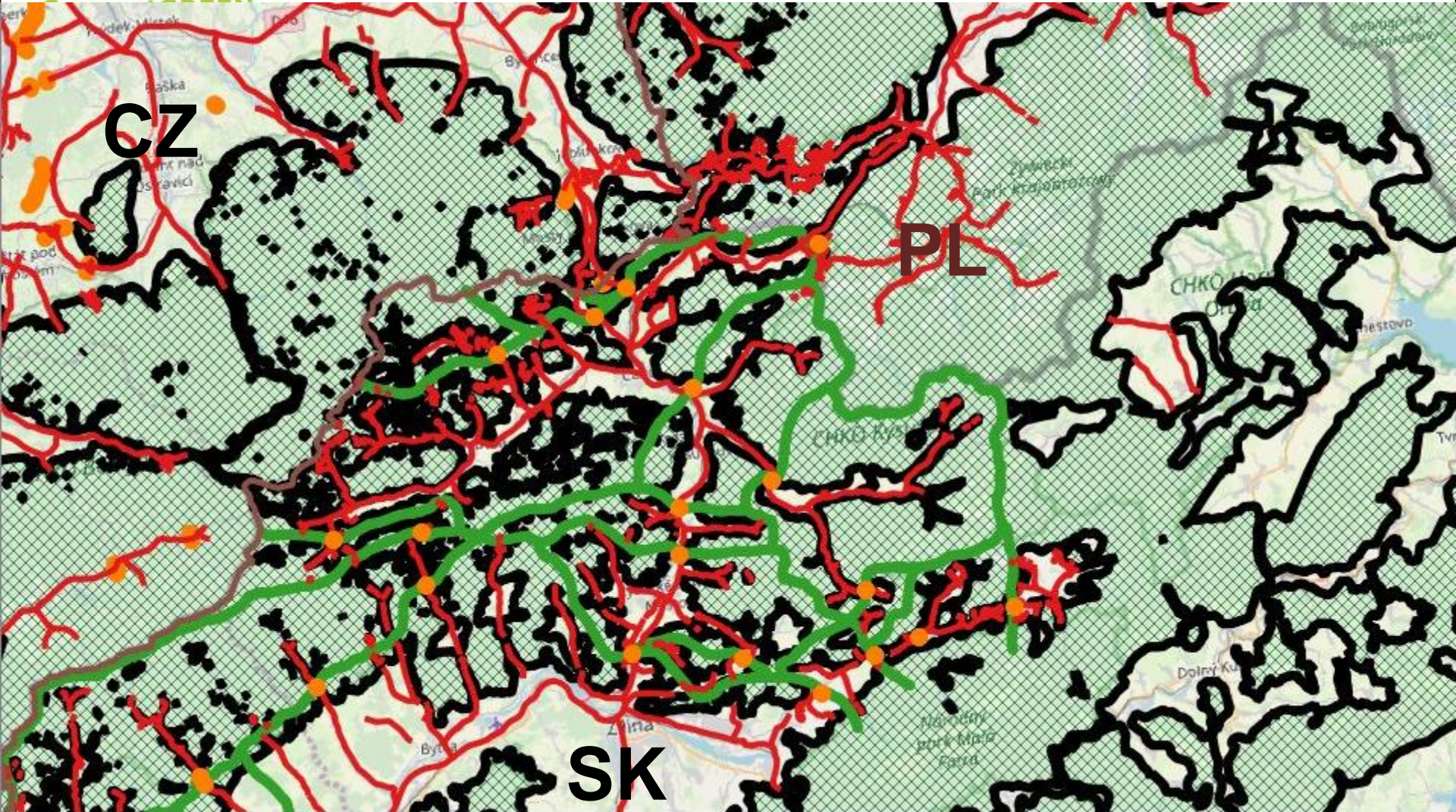














Migration corridors are identified in two levels of detail:

1. whole Carpathian scale (based on habitat usability models)
2. pilot areas - detailed delimitation based on knowledge of local experts and verification in the field



Thank you for your attention